

## Table of Contents

- Introduction
- State of Play
  - Coordination
  - Functioning and coordination of the infrastructure
  - Usage of the infrastructure for spatial information
  - Data Sharing Arrangements
  - Costs and Benefits
- Key Facts and Figures.
  - Monitoring Indicators

## Introduction

The INSPIRE Directive sets the minimum conditions for interoperable sharing and exchange of spatial data across Europe as part of a larger European Interoperability Framework and the e-Government Action Plan that contributes to the Digital Single Market Agenda. Article 21 of [INSPIRE Directive](#) defines the basic principles for monitoring and reporting. More detailed implementing rules regarding INSPIRE monitoring and reporting have been adopted as [Commission Implementing Decision \(EU\) 2019/1372](#) on the 19th August 2019.

This country fiche highlights the progress in the various areas of INSPIRE implementation. It includes information on [monitoring 2020](#) acquired in December 2020 and Member States update.

## State Of Play

A high-level view on the governance, use and impact of the INSPIRE Directive in Slovenia. More detailed information is available on the [INSPIRE knowledge base](#).

### Coordination

#### National Contact Point

**Name of Public Authority:** Surveying and Mapping Authority

**Postal Address:** Zemljemerska ulica 12

SI - 1000 Ljubljana

**Contact Email:** [Click to email](#)

**Telephone Number:** 00386 1 478 4800

**National INSPIRE Website:** <http://www.geoportal.gov.si/eng/>

**MIG Contacts: Contact Person:** Uroš Mladenović

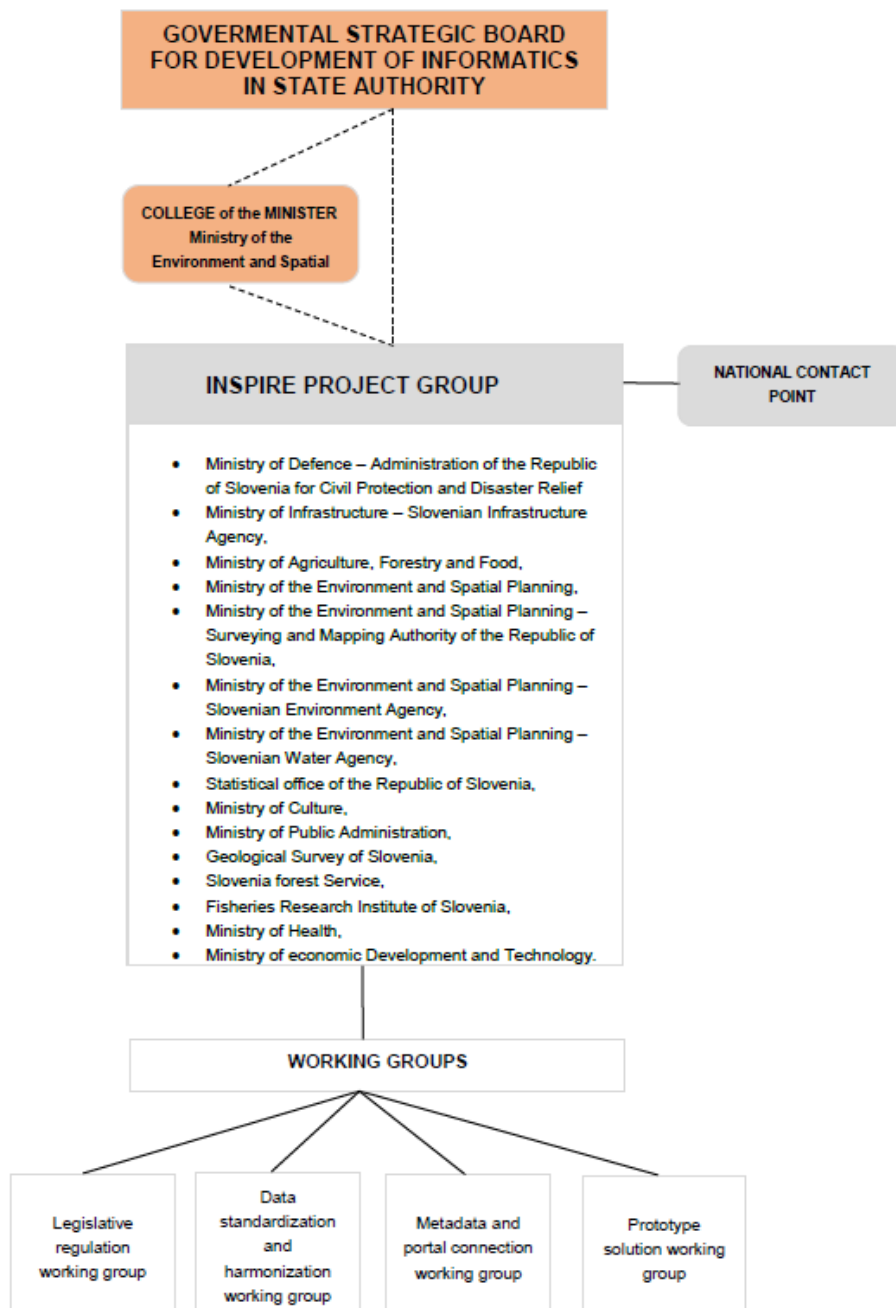
**Email:** uros.mladenovic@gov.si

**Telephone Number:** 00386 1 478 4870

**MIG T Contacts: Contact Person:** Matej Sotlar

**Email:** matej.sotlar@gov.si

**Telephone Number:** 00386 1 478 4833



### Coordination Structure & Progress:

- The second, third, fourth, fifth and the sixth Slovenian INSPIRE day were organised in 2016, 2017, 2018, 2019 and 2020.
  - Several workshops about different INSPIRE related topics for data and services providers and other stakeholders were organised in Slovenia.

### Functioning and coordination of the infrastructure

- Information available through Slovenian INSPIRE geoportal <http://www.geoportal.gov.si/>. The portal was renewed in 2018.
- Inclusion of INSPIRE to the broader strategy for managing spatial data and administration processes – eSpatial.
- The principles of the INSPIRE Directive have become an integral part of national strategies for managing spatial data, their use and linking with other national data.
- Slovenian metadata profile was established and [published](#). The profile is extended INSPIRE metadata profile.
- Key instructions, recommendations and technical guidelines were translated. Additionally strategic documents were prepared along with education program, which are accessible on the Slovenian INSPIRE geoportal.
- INSPIRE web services are open and freely accessible.

### Usage of the infrastructure for spatial information

- The public use of spatial data services and spatial data themselves has increased in 2016-2020 as the result of free

access to web services, the use is steadily increasing

- INSPIRE metadata are regularly harvested to national open data portal.
- A practical example of cross-border cooperation was being carried in the scope of harmonisation of spatial data on the border with Italy (project HARMO-DATA).
- Standardised location data is used for most digital public services in domains such as environment, marine, transport, energy, property/land administrations, spatial planning, smart cities, health, culture, education, utility, tax policy...

#### Data sharing arrangements

- National interoperability framework – NIO is operating as a tool to ease the cooperation inside public administration
- In the time period 2016-2020 no practical examples of performed data sharing agreements between public authorities and European Union institutions and bodies were recorded
- Public Information Access Act has been slightly changed on 8 May 2016 according to the Directive on the re-use of public sector information
- Most location data is available free of charge under an open licence without restrictions.

#### Costs and benefits

- The transparency and opening of data stimulates the efficiency in the public sector and help with the broadening of digital economy and business development.
- Monitoring the advantages and benefits is not systematically regulated.

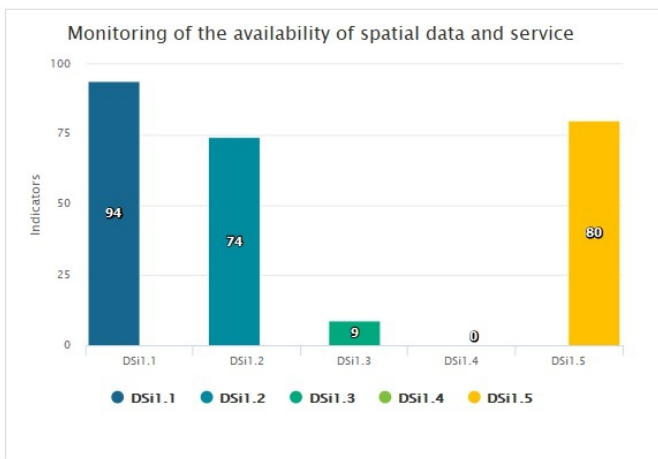
### Key facts and figures

# Slovenia

Indicators in support of [Commission Decision \(EU\) 2019/1372](#) implementing Directive 2007/2/EC (INSPIRE) as regards to monitoring and reporting

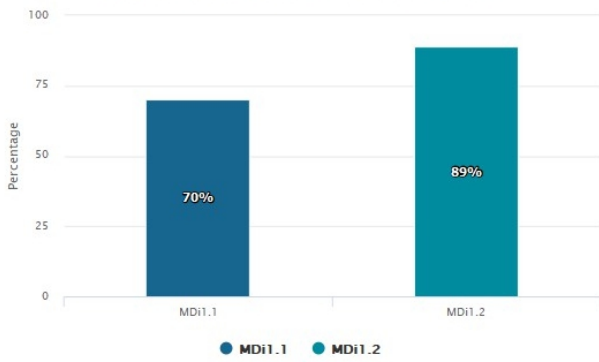
Graphs generated with data taken from: [https://inspire-geoportal.ec.europa.eu/mr2020\\_details.html?country=si](https://inspire-geoportal.ec.europa.eu/mr2020_details.html?country=si)

The date of harvest metadata: 16/12/2020



Legend	
Indicator	Definition
● DSi1.1	The number of spatial data sets for which metadata exist
● DSi1.2	The number of spatial data services for which metadata exist
● DSi1.3	The number of spatial data sets for which the metadata contains one or more keywords from a register provided by the Commission indicating that the spatial data set is used for reporting under the environmental legislation
● DSi1.4	The number of spatial data sets for which the metadata contains a keyword from a register provided by the Commission indicating that the spatial data set covers regional territory
● DSi1.5	The number of spatial data sets for which the metadata contains a keyword from a register provided by the Commission indicating that the spatial data set covers national territory

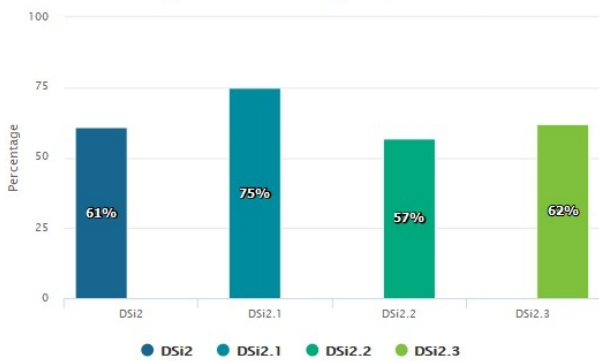
Monitoring of the conformity of metadata



Legend

Indicator	Definition
MDi1.1	Percentage of metadata for spatial data sets conformant with Commission Regulation (EC) No 1205/2008 as regards metadata
MDi1.2	Percentage of metadata for spatial data services conformant with Commission Regulation (EC) No 1205/2008 as regards metadata

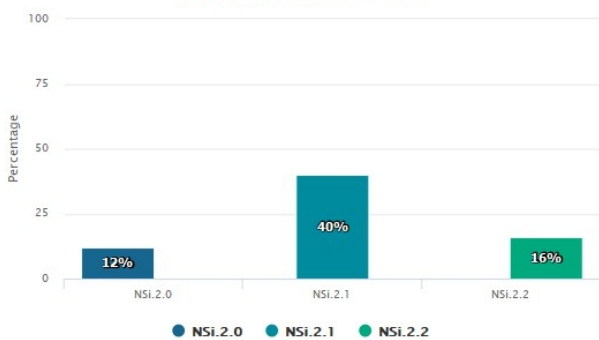
Monitoring of the conformity of spatial data sets



Legend

Indicator	Definition
DSi2	Percentage of spatial data sets that are in conformity with Commission Regulation (EU) No 1089/2010 as regards interoperability of spatial data sets
DSi2.1	Percentage of spatial data sets, corresponding to the themes listed in Annex I, that are in conformity with Commission Regulation (EU) No 1089/2010 as regards interoperability of spatial data sets
DSi2.2	Percentage of spatial data sets, corresponding to the themes listed in Annex II, that are in conformity with Commission Regulation (EU) No 1089/2010 as regards interoperability of spatial data sets
DSi2.3	Percentage of spatial data sets, corresponding to the themes listed in Annex III, that are in conformity with Commission Regulation (EU) No 1089/2010 as regards interoperability of spatial data sets

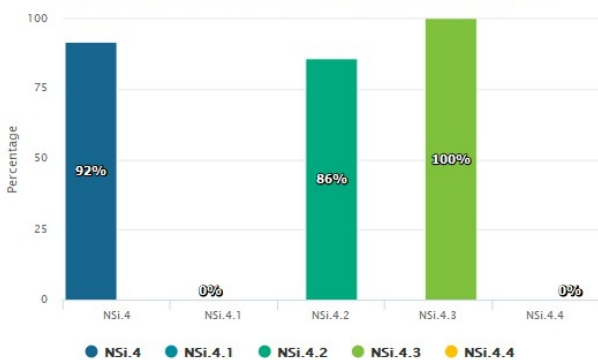
Monitoring of the accessibility of spatial data sets through view and download services



Legend

Indicator	Definition
NSi.2.0	The Percentage of spatial data sets that are accessible through view and the download services
NSi.2.1	The Percentage of spatial data sets that are accessible through view services
NSi.2.2	The Percentage of spatial data sets that are accessible through download services

Monitoring of the conformity of the network services



Legend

Indicator	Definition
NSi.4	Percentage of the network services that are in conformity with Commission Regulation (EC) No 976/2009 as regards the Network Services
NSi.4.1	Percentage of the discovery services that are in conformity with Commission Regulation (EC) No 976/2009 as regards the Network Services
NSi.4.2	Percentage of the view services that are in conformity with Commission Regulation (EC) No 976/2009 as regards the Network Services
NSi.4.3	Percentage of the download services that are in conformity with Commission Regulation (EC) No 976/2009 as regards the Network Services
NSi.4.4	Percentage of the transformation services that are in conformity with Commission Regulation (EC) No 976/2009 as regards the Network Services

