

Table of Contents

- Introduction
- State of Play
 - Coordination
 - Functioning and coordination of the infrastructure
 - Usage of the infrastructure for spatial information
 - Data Sharing Arrangements
 - Costs and Benefits
- Key Facts and Figures.
 - Monitoring Indicators

Introduction

The INSPIRE Directive sets the minimum conditions for interoperable sharing and exchange of spatial data across Europe as part of a larger European Interoperability Framework and the e-Government Action Plan that contributes to the Digital Single Market Agenda. Article 21 of [INSPIRE Directive](#) defines the basic principles for monitoring and reporting. More detailed implementing rules regarding INSPIRE monitoring and reporting have been adopted as [Commission Implementing Decision \(EU\) 2019/1372](#) on the 19th August 2019.

This country fiche highlights the progress in the various areas of INSPIRE implementation. It includes information on [monitoring 2019](#) acquired in December 2019 and Member States update.

State Of Play

A high-level view on the governance, use and impact of the INSPIRE Directive in Romania. More detailed information is available on the [INSPIRE knowledge base](#).

Coordination

National Contact Point

Name of Public Authority: National Agency for Cadastre and Land Registration

Postal Address: No. 202A Splaiul Independenței, 1st floor, sector 6, Bucharest

Contact Email: [Click to email](#)

Telephone Number: +40 21 317 73 39

Telefax Number: +40 21 316 52 24

National INSPIRE Website: <http://www.ancpi.ro>

MIG Contacts: Contact Person: Marilena Daniela Doncuta

Email: marilena.doncuta@mmediu.ro

Contact Person: Ioan - Laurentiu Raileanu

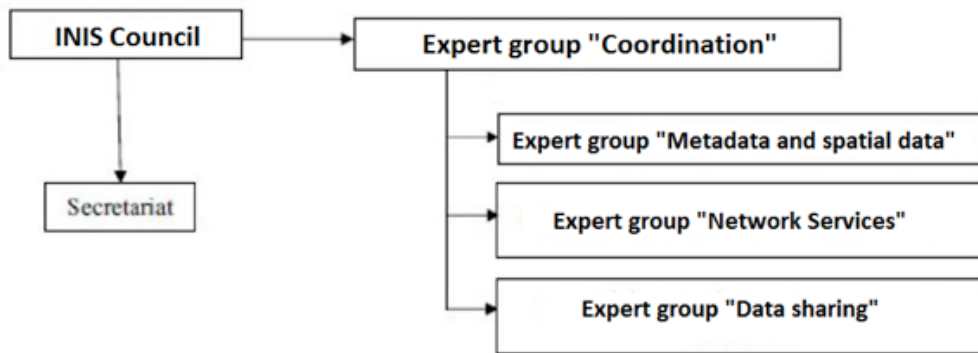
Email: ioan.raileanu@ancpi.ro

MIG T Contacts: Contact Person: Simona Daniela Bunea

Email: simona.bunea@ancpi.ro

Contact Person: Gabriela Dragan

Email: gabriela.dragan@ancpi.ro



Coordination Structure & Progress:

- The normative act of transposition of the INSPIRE Directive, is the Government Ordinance no. 4/2010 on the establishment of the National Infrastructure for spatial information in Romania and has been republished in 2014. It provides the legal framework for the establishment of the Council for National Spatial Data Infrastructure (INIS Council), which has a coordinating role in the implementation of the INSPIRE Directive and consists of representatives of 21 public authorities.

The INIS Council presidency is ensured by the National Agency for Cadastre and Land Registration (ANCPI), and the vice-presidency is held by the Ministry of Environment, Water and Forests. In its activity, the INIS Council is assisted by 4 groups of experts, as shown above.

The information presented in this document refers to the period January 2019 to March 2020.

Progress

- In order to fulfil their responsibilities, the public authorities set up specialized departments with responsibilities in this regard.
- Expert groups continued their specific activity.
- The information is available through the INIS geo-portal of Romania <http://geoportal.gov.ro>,

Functioning and coordination of the infrastructure

- The Geoportal of the Ministry of National Defense can be accessed at: <https://inspire.geomil.ro>
- RO-RISK portal for national disaster assessment can be accessed through Internet Explorer at <http://gis.ro-risk.ro/geoportal/>. The portal ensures the access of all interested parties to the data regarding the elements exposed to risks and / or vulnerable, hazard and risk maps in Romania
- The spatial data in the field of geology can be accessed through the geo-portal of the Geological Institute of Romania <http://geoportal.igr.ro>
- At the web address <https://gis.cestrin.ro/arcgis/home/> was created the spatial data portal necessary for publishing of the view and download services which requires authentication.
- The INIS geoportal has been updated and new capabilities have been added to facilitate access. Version 1 of some applications for view and download of open spatial data sets in national format have been finalized.
- The geo-portal of the National Meteorological Agency, <https://inspire.meteoromania.ro> gives access to the download and view services for the themes III.7 Environmental monitoring facilities, III.13 Atmospheric conditions, III.14 Meteorological geographical features
- INIS objectives promote the principle: single collection, multiple use.
- The INIS Council encourages partnerships and cooperation between public institutions and authorities regarding the exchange of spatial data.

Usage of the infrastructure for spatial information

- All public authorities in Romania are downloading the data set according to INSPIRE related to the theme I.4 "Administrative Units", from the INIS geo-portal, based on an open data license.
- ANCPI has achieved INSPIRE compliant data accessible through compliant view and download services (sample of data) in accordance with the themes I.5 Addresses, I.6 Cadastral parcels and III.2 Buildings.
- ANCPI has made an application for visualizing the spatial data sets for water and sewer services under theme III.6 Utility and Government Services (<https://geoportal.ancpi.ro/portal/apps/webappviewer/index.html?id=4d48e5418d5343adb81451319bfab558>). These data are still in national format.
- The National Administration "Romanian Waters" has performed INSPIRE compliant data accessible through compliant download and view services, for priority data sets: Area management / restriction / regulation zones & reporting units, GroundWaterBody, Natural risk zones, Environmental monitoring Facilities.
- National Company for Administration of Road Infrastructure has achieved INSPIRE compliant data accessible through compliant view and download services for noise maps (III.11 theme Area management / restriction / regulation zones & reporting units).

- The National Railway Company "CFR" - SA has achieved INSPIRE compliant data accessible through compliant free view services for the spatial data set "Rail transport networks". The data can be accessed through download services that requires authentication through user / password.

Data sharing arrangements

- Collaboration protocols between public authorities have focused on the exchange of geo-spatial data.
- INIS provides a uniform framework for data sharing and public access to them.

Costs and benefits

- ANCPI continued the development of the framework contract concluded at the end of 2018 for a period of 4 years for the realization of view and download services for the data sets related to the themes I.5 Addresses, III.2 Buildings and III.6 Utility and government services.
- The Ministry of Agriculture and Rural Development through the Agency for Payments and Intervention in Agriculture has finalized the procurement procedure for the realization of the services compliant with the spatial data from themes III.9 Agricultural and Aquaculture Facilities – and II.3 Orthoimagery.
- The Ministry of Public Works, Development and Administration initiated the steps for elaborating and / or completing the urban planning documentation, within the Annual Program on the elaboration and / or updating of the general urban planning and the local urban planning regulations; these documentation will represent the basis for the realization of the spatial data sets related to theme III.4 Land use.
- The administration of the Danube Delta Biosphere Reserve will contribute to the realization of theme III.4 – Land use, with spatial data sets according to the INSPIRE specifications, within a project which is now under implementation.
- Ministry of Environment, Water and Forests began implementation in accordance with INSPIRE of the priority datasets related to air quality: AQ management zones, & Agglomeration, model AQ Areas, AQ monitoring stations, AQ date.
- INIS contributes to the improvement and reduction of the costs corresponding to the spatial information.
- The interoperability of the spatial data is necessary for the implementation of the projects of the central and local public authorities.
- Important beneficiaries of spatial data are at the level of public administration, as well as among the business environment (investors in real estate, wind farm developers) and the general public.

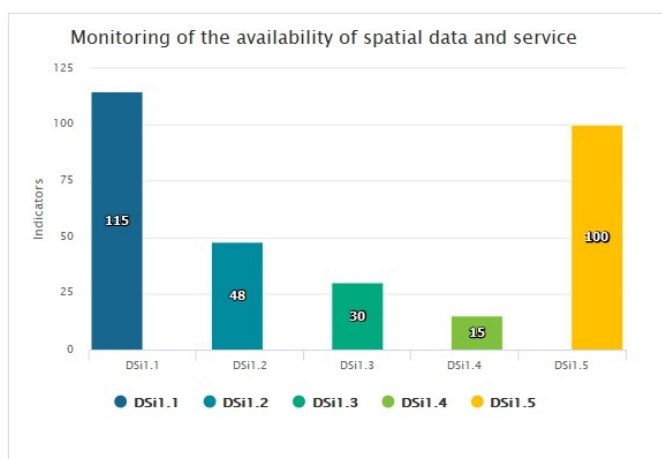
Key facts and figures

Romania

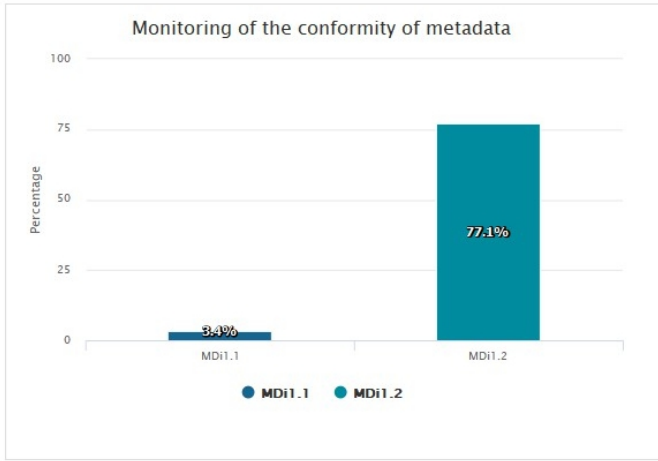
Indicators in support of [Commission Decision \(EU\) 2019/1372](#) implementing Directive 2007/2/EC (INSPIRE) as regards to monitoring and reporting

Graphs generated with data taken from: https://inspire-geoportal.ec.europa.eu/mr2019_details.html?country=ro

The date of harvest metadata: 16/12/2019

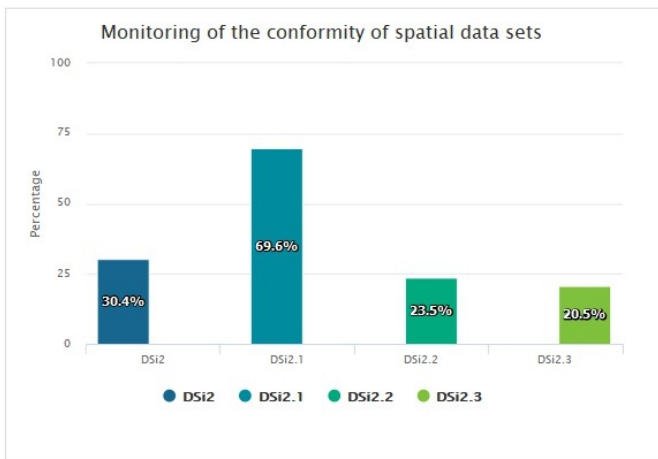


Legend	
Indicator	Definition
● DSi1.1	The number of spatial data sets for which metadata exist
● DSi1.2	The number of spatial data services for which metadata exist
● DSi1.3	The number of spatial data sets for which the metadata contains one or more keywords from a register provided by the Commission indicating that the spatial data set is used for reporting under the environmental legislation
● DSi1.4	The number of spatial data sets for which the metadata contains a keyword from a register provided by the Commission indicating that the spatial data set covers regional territory
● DSi1.5	The number of spatial data sets for which the metadata contains a keyword from a register provided by the Commission indicating that the spatial data set covers national territory



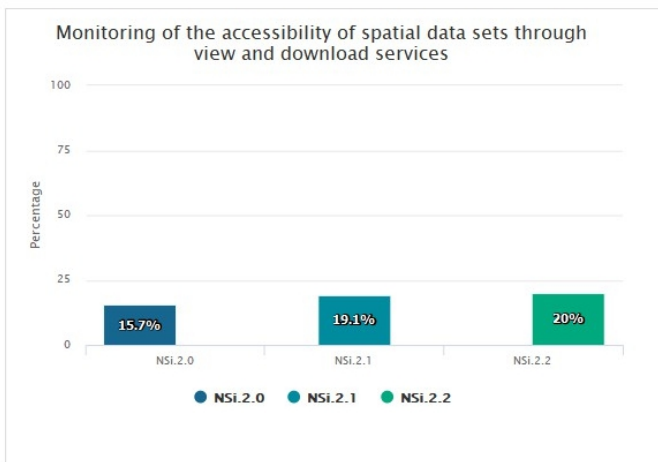
Legend

Indicator	Definition
MDi1.1	Percentage of metadata for spatial data sets conformant with Commission Regulation (EC) No 1205/2008 as regards metadata
MDi1.2	Percentage of metadata for spatial data services conformant with Commission Regulation (EC) No 1205/2008 as regards metadata



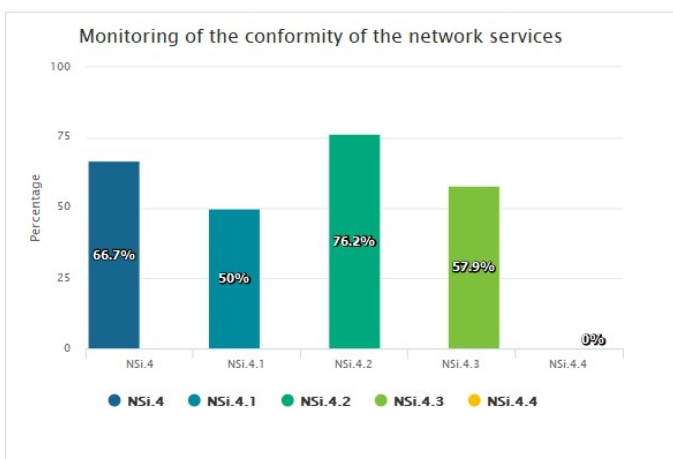
Legend

Indicator	Definition
DSi2	Percentage of spatial data sets that are in conformity with Commission Regulation (EU) No 1089/2010 as regards interoperability of spatial data sets
DSi2.1	Percentage of spatial data sets, corresponding to the themes listed in Annex I, that are in conformity with Commission Regulation (EU) No 1089/2010 as regards interoperability of spatial data sets
DSi2.2	Percentage of spatial data sets, corresponding to the themes listed in Annex II, that are in conformity with Commission Regulation (EU) No 1089/2010 as regards interoperability of spatial data sets
DSi2.3	Percentage of spatial data sets, corresponding to the themes listed in Annex III, that are in conformity with Commission Regulation (EU) No 1089/2010 as regards interoperability of spatial data sets



Legend

Indicator	Definition
NSi.2.0	The Percentage of spatial data sets that are accessible through view and the download services
NSi.2.1	The Percentage of spatial data sets that are accessible through view services
NSi.2.2	The Percentage of spatial data sets that are accessible through download services



Legend

Indicator	Definition
NSi.4	Percentage of the network services that are in conformity with Commission Regulation (EC) No 976/2009 as regards the Network Services
NSi.4.1	Percentage of the discovery services that are in conformity with Commission Regulation (EC) No 976/2009 as regards the Network Services
NSi.4.2	Percentage of the view services that are in conformity with Commission Regulation (EC) No 976/2009 as regards the Network Services
NSi.4.3	Percentage of the download services that are in conformity with Commission Regulation (EC) No 976/2009 as regards the Network Services
NSi.4.4	Percentage of the transformation services that are in conformity with Commission Regulation (EC) No 976/2009 as regards the Network Services

