

Table of Contents

- Introduction
- State of Play
 - Coordination
 - Functioning and coordination of the infrastructure
 - Usage of the infrastructure for spatial information
 - Data Sharing Arrangements
 - Costs and Benefits
- Key Facts and Figures.
 - Monitoring Indicators

Introduction

The INSPIRE Directive sets the minimum conditions for interoperable sharing and exchange of spatial data across Europe as part of a larger European Interoperability Framework and the e-Government Action Plan that contributes to the Digital Single Market Agenda. Article 21 of [INSPIRE Directive](#) defines the basic principles for monitoring and reporting. More detailed implementing rules regarding INSPIRE monitoring and reporting have been adopted as [Commission Implementing Decision \(EU\) 2019/1372](#) on the 19th August 2019.

This country fiche highlights the progress in the various areas of INSPIRE implementation. It includes information on [monitoring 2020](#) acquired in December 2020 and Member States update.

State Of Play

A high-level view on the governance, use and impact of the INSPIRE Directive in Romania. More detailed information is available on the [INSPIRE knowledge base](#).

Coordination

National Contact Point

Name of Public Authority: National Agency for Cadastre and Land Registration

Postal Address: No. 202A Splaiul Independenței, 1st floor, sector 6, Bucharest

Contact Email: [Click to email](#)

Telephone Number: +40 21 317 73 39

Telefax Number: +40 21 316 52 24

National INSPIRE Website: <http://www.ancpi.ro>

MIG Contacts: Contact Person: Marilena Daniela Doncuta

Email: marilena.doncuta@mmediu.ro

Contact Person: Ioan - Laurentiu Raileanu

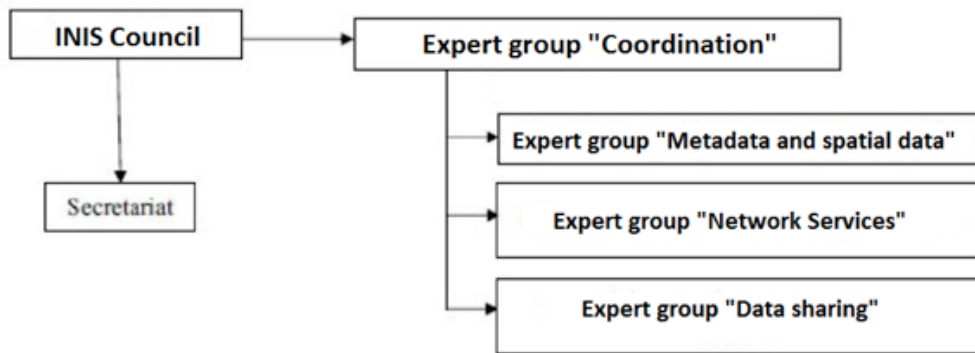
Email: ioan.raileanu@ancpi.ro

MIG T Contacts: Contact Person: Gabriela Magearu

Email: gabriela.magearu@ancpi.ro

Contact Person: Gabriela Dragan

Email: gabriela.dragan@ancpi.ro



Coordination Structure & Progress:

- The normative act of transposition of the INSPIRE Directive, is the Government Ordinance no. 4/2010 on the establishment of the National Infrastructure for spatial information in Romania and has been republished in 2014. It provides the legal framework for the establishment of the Council for National Spatial Data Infrastructure (INIS Council), which has a coordinating role in the implementation of the INSPIRE Directive and consists of representatives of 21 public authorities.

The INIS Council presidency is ensured by the National Agency for Cadastre and Land Registration (ANCPI), and the vice-presidency is held by the Ministry of Environment, Water and Forests. In its activity, the INIS Council is assisted by 4 groups of experts, as shown above.

The information presented in this document refers to the period January 2020 – March 2021.

- Progress
- In order to fulfil their responsibilities, the public authorities set up specialized departments with responsibilities in this regard.
- Expert groups continued their specific activity.
- The information is available through the INIS geo-portal of Romania www.geoportal.gov.ro,

Functioning and coordination of the infrastructure

- The Geoportal of the Ministry of National Defence can be accessed at: <https://inspire.geomil.ro>
- RO-RISK portal for disaster assessment at national level can be accessed through Internet Explorer at <http://gis.ro-risk.ro/geoportal/>. The portal ensures the access of all interested parties to the data regarding the elements exposed to risks and / or vulnerable, hazard and risk maps in Romania
- The spatial data in the field of geology can be accessed through the geo-portal of the Geological Institute of Romania <http://geoportal.igr.ro>
- At the web address <https://gis.cestrin.ro/arcgis/home/> was created the spatial data portal necessary for publishing of the view and download services which requires authentication
- The geo-portal of the National Meteorological Agency, <https://inspire.meteoromania.ro> gives access to the download and view services for the themes III.7 Environmental monitoring facilities, III.13 Atmospheric conditions, III.14 Meteorological geographical features
- Spatial data regarding hidrography are published within the geo-portal of the National Administration "Romanian Waters" , <http://inspire.rowater.ro/geoportal/>
- Railway transport networks can be accessed in the geo-portal <https://inspire.infofer.ro/>
- The geo-portal of the Agency for Payments and Intervention for Agriculture (APIA) https://inspire.apia.org.ro/metadata_manager/#searchPanel was created, where one can discover metadata belonging to spatial data sets and services created by APIA
- The geoportalul of the National Institute for Public Health <https://inspire.insp.gov.ro/geoportal/#searchPanel>, was federated with INIS geoportal and one can access data related to theme III.5 Human health and safety, through compliant view and download services
- Statistical data from themes III.1 Statistical units and III.10 Population distribution - demography can be accessed also through the geoportal of the National Institute of Statistics <https://inspire.insse.ro/geoportal/>
- The INIS geoportal has been updated and new capabilities have been added to facilitate access. Version 1 of some applications for view and download of open spatial data sets in national format have been finalized. Geoportal web applications are federated with the INIS geoportal of Romania, so all spatial data can be discovered in the INIS geoportal and, implicitly in the INSPIRE geoportal of the EC
- Restricted access services are not available in the INSPIRE geo-portal
- There was an increase in download services compared to 2020, as seen in the INSPIRE geoportal.

Usage of the infrastructure for spatial information

- All public authorities are downloading the INSPIRE compliant data set related to the theme I.4 "Administrative Units", from the INIS geo-portal, based on an open data license.

- Spatial data in national format, within Download Applications from the INIS geoportal are declared Open Data and are provided on the basis of licenses.
- The use of INIS allows to obtain a clear image of the available data and services, identifying the shortcomings to ensure a complete spatial infrastructure.

Data sharing arrangements

- To avoid duplication of data and procurement, public authorities conclude protocols on the use of spatial data they hold. Not only INSPIRE data are included, but also spatial data from Romania that make up the national infrastructure.
- The INIS Council encourages partnerships and cooperation between public institutions and authorities regarding the exchange of spatial data.
- INIS provides a uniform framework for data sharing and public access to them.

Costs and benefits

- ANCPPI continued the development of the framework contract concluded at the end of 2018 for a period of 4 years for the realization of view and download services for the data sets related to the themes *Addresses, Buildings and Utility and governmental services*.
- The Ministry of Environment, Waters and Forests continued the activity of ensuring the compliance with INSPIRE of the spatial data sets and services for themes III.18 Habitats and biotopes and III.19 The distribution of species within projects financed by the Large Infrastructure Operational Program 2014-2020 , Priority Axis 4.
- The Ministry of Public Works, Development and Administration – funding has been allocated in 2020 for elaborating and / or completing the urban planning documentation, for 957 administrative territorial units. These documentation will represent the basis for the achievement of the spatial data sets related to theme III.4 Land use.
- The INIS geoportal facilitates the discovery of data for the realization of which common standards have been used, which allow interoperability between public authorities and Member States, as well as their sharing and reuse using a common infrastructure.

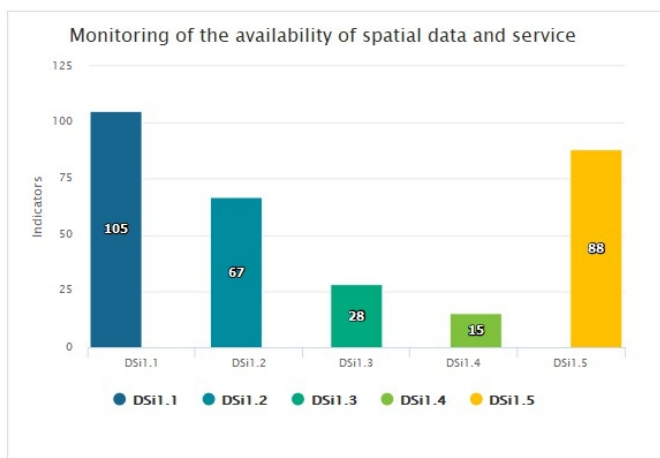
Key facts and figures

Romania

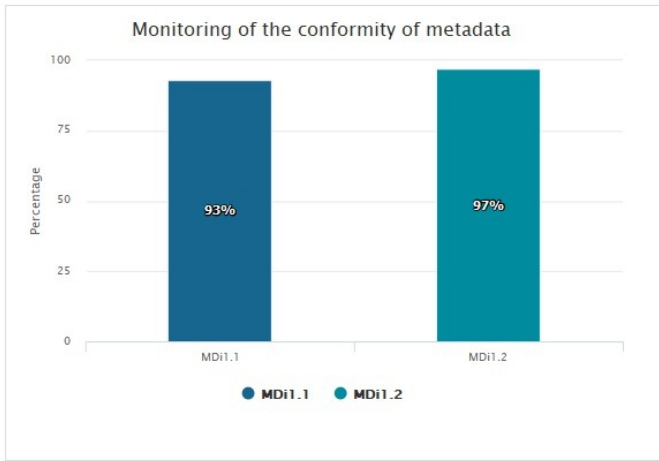
Indicators in support of [Commission Decision \(EU\) 2019/1372](#) implementing Directive 2007/2/EC (INSPIRE) as regards to monitoring and reporting

Graphs generated with data taken from: https://inspire-geoportal.ec.europa.eu/mr2020_details.html?country=ro

The date of harvest metadata: 16/12/2020

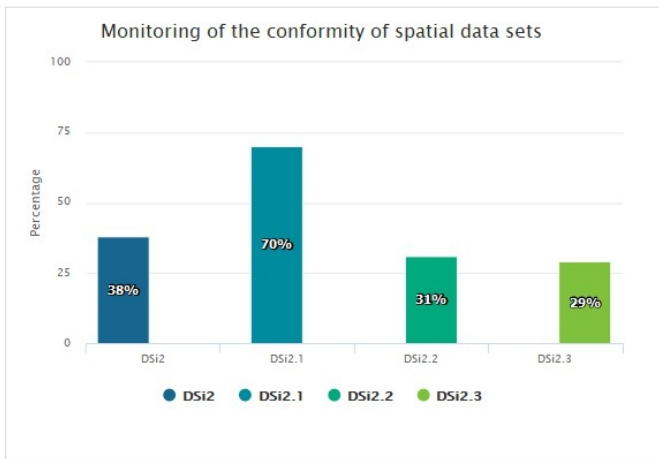


Legend	
Indicator	Definition
● DSI1.1	The number of spatial data sets for which metadata exist
● DSI1.2	The number of spatial data services for which metadata exist
● DSI1.3	The number of spatial data sets for which the metadata contains one or more keywords from a register provided by the Commission indicating that the spatial data set is used for reporting under the environmental legislation
● DSI1.4	The number of spatial data sets for which the metadata contains a keyword from a register provided by the Commission indicating that the spatial data set covers regional territory
● DSI1.5	The number of spatial data sets for which the metadata contains a keyword from a register provided by the Commission indicating that the spatial data set covers national territory



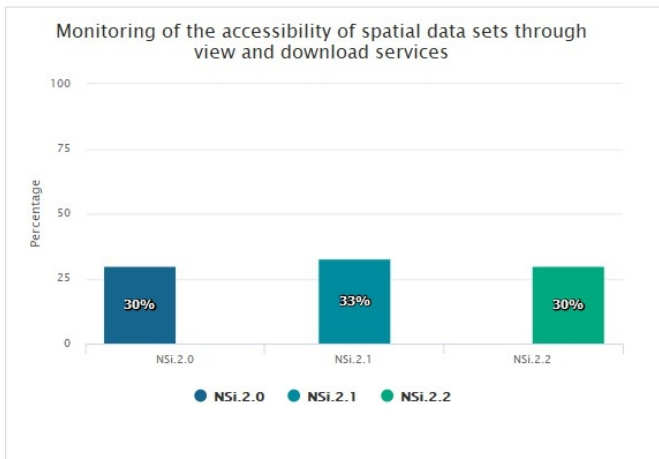
Legend

Indicator	Definition
MDi1.1	Percentage of metadata for spatial data sets conformant with Commission Regulation (EC) No 1205/2008 as regards metadata
MDi1.2	Percentage of metadata for spatial data services conformant with Commission Regulation (EC) No 1205/2008 as regards metadata



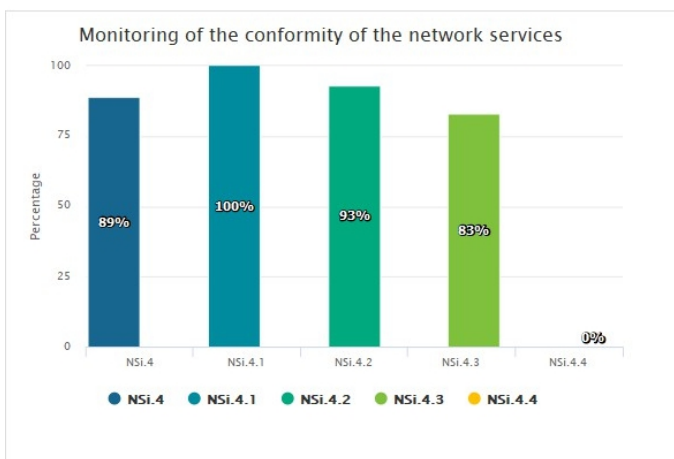
Legend

Indicator	Definition
DSI2	Percentage of spatial data sets that are in conformity with Commission Regulation (EU) No 1089/2010 as regards interoperability of spatial data sets
DSI2.1	Percentage of spatial data sets, corresponding to the themes listed in Annex I, that are in conformity with Commission Regulation (EU) No 1089/2010 as regards interoperability of spatial data sets
DSI2.2	Percentage of spatial data sets, corresponding to the themes listed in Annex II, that are in conformity with Commission Regulation (EU) No 1089/2010 as regards interoperability of spatial data sets
DSI2.3	Percentage of spatial data sets, corresponding to the themes listed in Annex III, that are in conformity with Commission Regulation (EU) No 1089/2010 as regards interoperability of spatial data sets



Legend

Indicator	Definition
NSI.2.0	The Percentage of spatial data sets that are accessible through view and the download services
NSI.2.1	The Percentage of spatial data sets that are accessible through view services
NSI.2.2	The Percentage of spatial data sets that are accessible through download services



Legend

Indicator	Definition
NSI.4	Percentage of the network services that are in conformity with Commission Regulation (EC) No 976/2009 as regards the Network Services
NSI.4.1	Percentage of the discovery services that are in conformity with Commission Regulation (EC) No 976/2009 as regards the Network Services
NSI.4.2	Percentage of the view services that are in conformity with Commission Regulation (EC) No 976/2009 as regards the Network Services
NSI.4.3	Percentage of the download services that are in conformity with Commission Regulation (EC) No 976/2009 as regards the Network Services
NSI.4.4	Percentage of the transformation services that are in conformity with Commission Regulation (EC) No 976/2009 as regards the Network Services

