

Table of Contents

- Introduction
- State of Play
 - Coordination
 - Functioning and coordination of the infrastructure
 - Usage of the infrastructure for spatial information
 - Data Sharing Arrangements
 - Costs and Benefits
- Key Facts and Figures.
 - Monitoring Indicators

Introduction

As per Subsidiary Legislation 549.82 Infrastructure for Spatial Planning Regulations, as of 2021 the Planning Authority (PA) has assumed the role of the competent authority with regards to the INSPIRE Directive. The Directive sets the minimum conditions for interoperable sharing and exchange of spatial data across Europe as part of a larger European Interoperability Framework and the e-Government Action Plan that contributes to the Digital Single Market Agenda. Article 21 of [INSPIRE Directive](#) defines the basic principles for monitoring and reporting. More detailed implementing rules regarding INSPIRE monitoring and reporting have been adopted as [Commission Implementing Decision \(EU\) 2019/1372](#) on the 19th August 2019.

This country fiche highlights the progress in the various areas of INSPIRE implementation. It includes information on [monitoring 2022](#) acquired in December 2022 and Member States update.

State Of Play

A high-level view on the governance, use and impact of the INSPIRE Directive in Malta. More detailed information is available on the [INSPIRE knowledge base](#).

Coordination

National Contact Point

Name of Public Authority: Planning Authority

Postal Address: Planning Authority

St.Francis Ravelin

Floriana

Malta

Contact Email: [Click to email](#)

Telephone Number: +356 2290 1650

Telefax Number: +356 2290 0000

National INSPIRE Website: <https://msdi.data.gov.mt/>

MIG Contacts: Contact Person: Omar Hili

Email: inspire@pa.org.mt

Contact Person: Frankie Farrugia

Email: inspire@pa.org.mt

Contact Person: Joseph Gauci

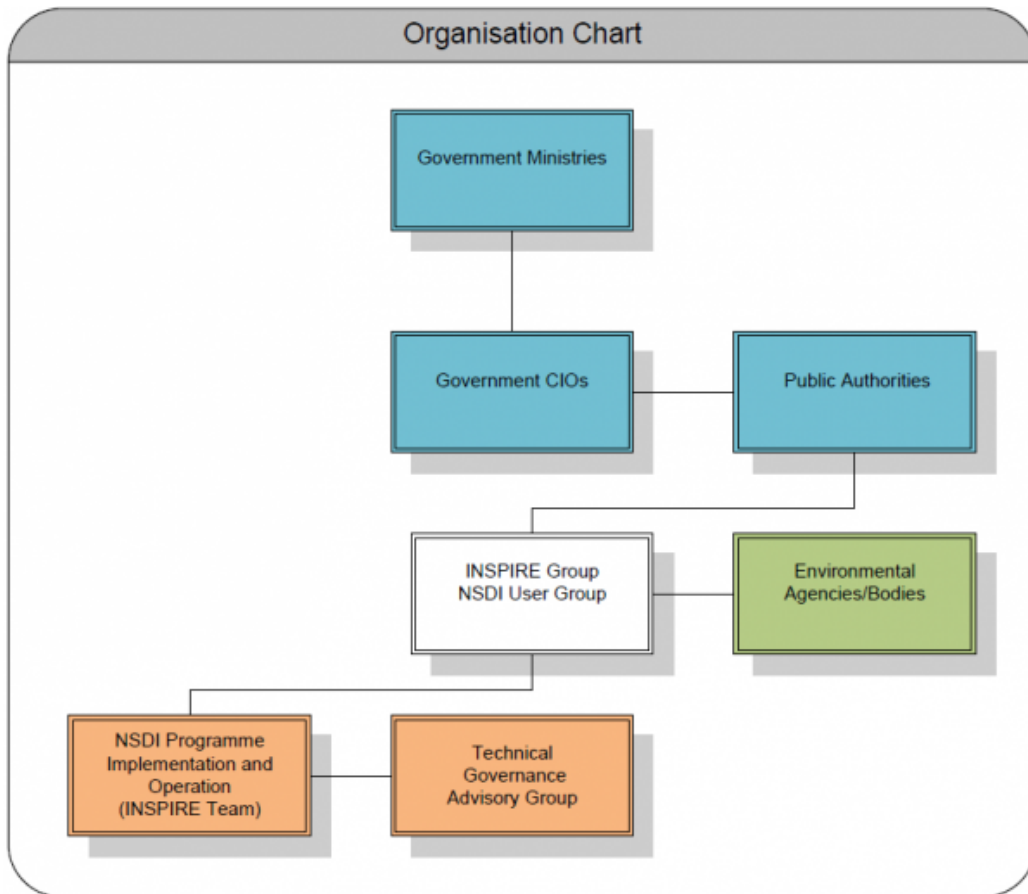
Email: inspire@pa.org.mt

Telephone Number: +356 2290 1578

MIG T Contacts: Contact Person: Omar Hili

Email: inspire@pa.org.mt

Contact Person: Frankie Farrugia
Email: inspire@pa.org.mt



Coordination Structure & Progress:

Name of the public authority	Planning Authority
Contact information:	
Mailing address	Planning Authority St.Francis Ravelin Floriana Malta
Telephone number	+356 2290 0000
Email address	inspire.malta@pa.org.mt
Organisation's website URL	https://www.pa.org.mt/
Contact person (MIG-P Contact person)	Joseph Gauci
Telephone number	+356 2290 1578
Email address	Joseph.gauci@pa.org.mt
Contact person (MIG-T Contact person)	Omar Hili
Substitutes	Elaine Sciberras Nour Ben Said

Telephone number	+356 2290 1650 +356 2290 1606 +356 2290 1519
Email address	omar.hili@pa.org.mt elaine.sciberras@pa.org.mt NourBen.Said@pa.org.mt

Progress

- The PA co-ordinates the implementation of the SDI (Spatial Data Infrastructure) programme. The Technical Governance Advisory group provides advisory services to the INSPIRE Team. The INSPIRE Team, which falls within the PA, is a multi-disciplinary team that provides the resources for the programme. The INSPIRE Team also has the main co-ordination function of the INSPIRE Group. The INSPIRE Group is a multi-disciplinary group which is made up of representatives from various entities including public authorities (data owners and data providers) and data consumers.
- Through the well-established structures and co-ordination of related initiatives, Malta has managed to achieve significant progress in the implementation of the INSPIRE Directive.

Functioning and coordination of the infrastructure

- The Malta Spatial Data Infrastructure (MSDI), found at <https://msdi.data.gov.mt>, is a portal that shares geospatial information through graphical user interface and web services to the general public, public service and public sector organisations.
- Further improvements were seen in data sharing and data/service compliance when compared to previous analysis, notwithstanding the spatial data infrastructure is continually being updated and the challenges encountered to gather and publish relevant geospatial data. Related metadata was made compliant to MD v2.0. The MSDI also acts as a common infrastructure that provides data sharing facilities to local public authorities that do not have the necessary geospatial infrastructure.
- Apart from the available network services, the MSDI offers a simplified approach to data sharing and use through the provision of an online electronic form request (eGovernment's electronic forms), which automatically processes online requests for; metadata, download and view information. This service was upgraded to the new government's Workflow Automation Service platform.
- Public authorities who contribute spatial data to the MSDI portal were provided with online training on the harmonisation of datasets using Hale and the use of the INSPIRE validator.
- Information dissemination regarding the INSPIRE Directive and data sharing updates are continuously performed through various communication channels to public authorities.
- Connection of the MSDI to the EC INSPIRE geoportal is continually ensured, and access to the infrastructure, datasets and metadata is available through the EC geoportal.

Usage of the infrastructure for spatial information

- The use of the INSPIRE infrastructure and its corresponding datasets, enabled Malta to obtain a clear picture of its available spatial data and identify gaps to ensure a complete spatial infrastructure. It has also brought together a network of data providers with the aim of streamlining spatial requirements in the creation of new data. This can be seen from the diversified and continuous requests for personal use and requests from the industrial and academic sector.

Data sharing arrangements

- In order to have a common approach to data sharing agreements, a set of data sharing guidelines have been referred to all government entities which serves as a common guide when creating agreements for data sharing. The guidelines are based on the "INSPIRE Guidelines on the Regulation on access", and the "INSPIRE – Good practice in data and service sharing". Furthermore, the initiatives to transpose the guidelines into Government policy have been concluded.
- All the current downloadable and viewable datasets within the Malta INSPIRE Geoportal (MSDI) are available at no cost.

Costs and benefits

- The The cumulative estimated costs, covering the period from January 2016 till December 2022, consist of: IT infrastructure costs €69 000 interoperability/compliance cost €237 000 and human resource effort costs €829,000. The effort cost is an aggregation of the efforts used for administration and upkeep of the Malta geoportal, Monitoring and

Reporting, general co-ordination and support and co-ordination of horizontal measures. The human resource effort costs exclude effort required for the INSPIRE Directive implementation by stakeholders (data owners and public authorities).

- There are many benefits that can be derived from the implementation of the INSPIRE Directive, some of which include the relocation of spatial datasets to a central repository which facilitates data discovery, the use of common technical standards that allow interoperability amongst public authorities and member states, and the sharing and reuse of spatial data using a common infrastructure.

Key facts and figures

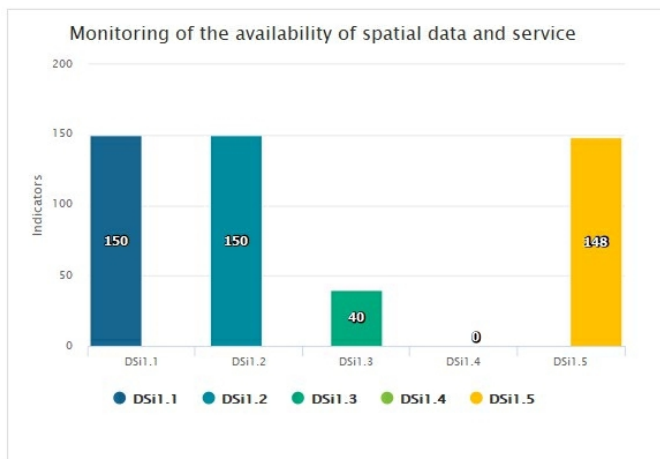
Malta

Indicators in support of [Commission Decision \(EU\) 2019/1372](#) implementing Directive 2007/2/EC (INSPIRE) as regards to monitoring and reporting

Graphs generated with data taken from: https://inspire-geoportal.ec.europa.eu/mr2022_details.html?country=mt

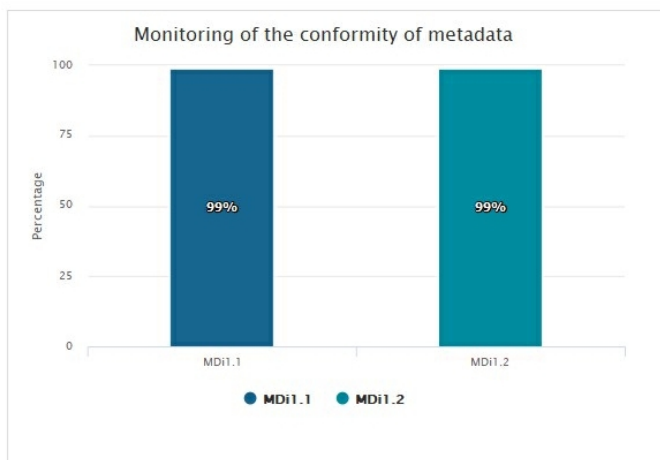
The date of harvest metadata: 2022-12-21, 13:07:37

Endpoint: 4b31ba79-6cfc-4c38-ac30-b78458dc6b8a



Legend

Indicator	Definition
DSI1.1	The number of spatial data sets for which metadata exist
DSI1.2	The number of spatial data services for which metadata exist
DSI1.3	The number of spatial data sets for which the metadata contains one or more keywords from a register provided by the Commission indicating that the spatial data set is used for reporting under the environmental legislation
DSI1.4	The number of spatial data sets for which the metadata contains a keyword from a register provided by the Commission indicating that the spatial data set covers regional territory
DSI1.5	The number of spatial data sets for which the metadata contains a keyword from a register provided by the Commission indicating that the spatial data set covers national territory



Legend

Indicator	Definition
MDi1.1	Percentage of metadata for spatial data sets conformant with Commission Regulation (EC) No 1205/2008 as regards metadata
MDi1.2	Percentage of metadata for spatial data services conformant with Commission Regulation (EC) No 1205/2008 as regards metadata

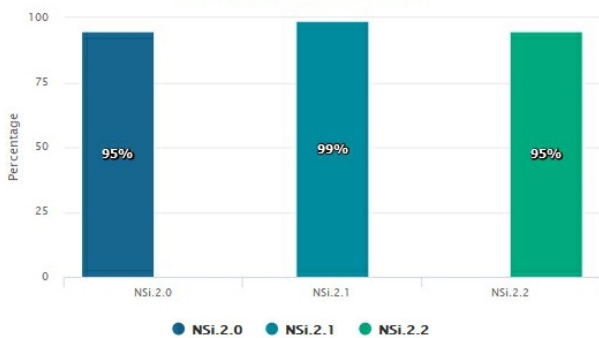
Monitoring of the conformity of spatial data sets



Legend

Indicator	Definition
DSi2	Percentage of spatial data sets that are in conformity with Commission Regulation (EU) No 1089/2010 as regards interoperability of spatial data sets
DSi2.1	Percentage of spatial data sets, corresponding to the themes listed in Annex I, that are in conformity with Commission Regulation (EU) No 1089/2010 as regards interoperability of spatial data sets
DSi2.2	Percentage of spatial data sets, corresponding to the themes listed in Annex II, that are in conformity with Commission Regulation (EU) No 1089/2010 as regards interoperability of spatial data sets
DSi2.3	Percentage of spatial data sets, corresponding to the themes listed in Annex III, that are in conformity with Commission Regulation (EU) No 1089/2010 as regards interoperability of spatial data sets

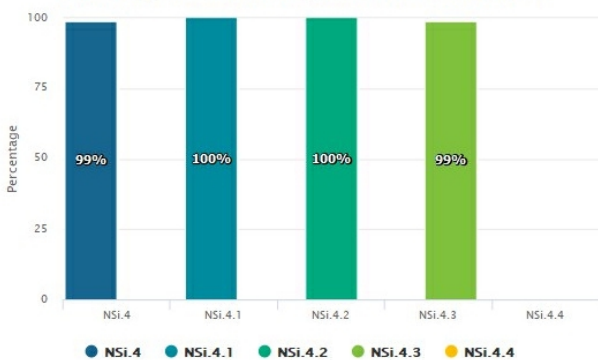
Monitoring of the accessibility of spatial data sets through view and download services



Legend

Indicator	Definition
NSi.2.0	The Percentage of spatial data sets that are accessible through view and the download services
NSi.2.1	The Percentage of spatial data sets that are accessible through view services
NSi.2.2	The Percentage of spatial data sets that are accessible through download services

Monitoring of the conformity of the network services



Legend

Indicator	Definition
NSi.4	Percentage of the network services that are in conformity with Commission Regulation (EC) No 976/2009 as regards the Network Services
NSi.4.1	Percentage of the discovery services that are in conformity with Commission Regulation (EC) No 976/2009 as regards the Network Services
NSi.4.2	Percentage of the view services that are in conformity with Commission Regulation (EC) No 976/2009 as regards the Network Services
NSi.4.3	Percentage of the download services that are in conformity with Commission Regulation (EC) No 976/2009 as regards the Network Services
NSi.4.4	Percentage of the transformation services that are in conformity with Commission Regulation (EC) No 976/2009 as regards the Network Services