

Table of Contents

- Introduction
- State of Play
 - Coordination
 - Functioning and coordination of the infrastructure
 - Usage of the infrastructure for spatial information
 - Data Sharing Arrangements
 - Costs and Benefits
- Key Facts and Figures.
 - Monitoring Indicators

Introduction

The INSPIRE Directive sets the minimum conditions for interoperable sharing and exchange of spatial data across Europe as part of a larger European Interoperability Framework and the e-Government Action Plan that contributes to the Digital Single Market Agenda. Article 21 of [INSPIRE Directive](#) defines the basic principles for monitoring and reporting. More detailed implementing rules regarding INSPIRE monitoring and reporting have been adopted as [Commission Implementing Decision \(EU\) 2019/1372](#) on the 19th August 2019.

This country fiche highlights the progress in the various areas of INSPIRE implementation. It includes information on [monitoring 2021](#) acquired in December 2021 and Member States update.

State Of Play

A high-level view on the governance, use and impact of the INSPIRE Directive in Cyprus. More detailed information is available on the [INSPIRE knowledge base](#).

Coordination

National Contact Point

Name of Public Authority: Ministry of Interior

Contact Email: [Click to email](#)

National INSPIRE Website: http://www.geoportal.gov.cy/MOI/DLS/geoportal/geoportal.nsf/index_en/index_en?Op...
<http://www.moi.gov.cy/dls>

MIG Contacts: Contact Person: Andreas Hadjiraftis

Email: ahadjiraftis@dls.moi.gov.cy

Contact Person: Anthi Lakkotrypi - Koukkouri

Email: alakkotrypi@dls.moi.gov.cy

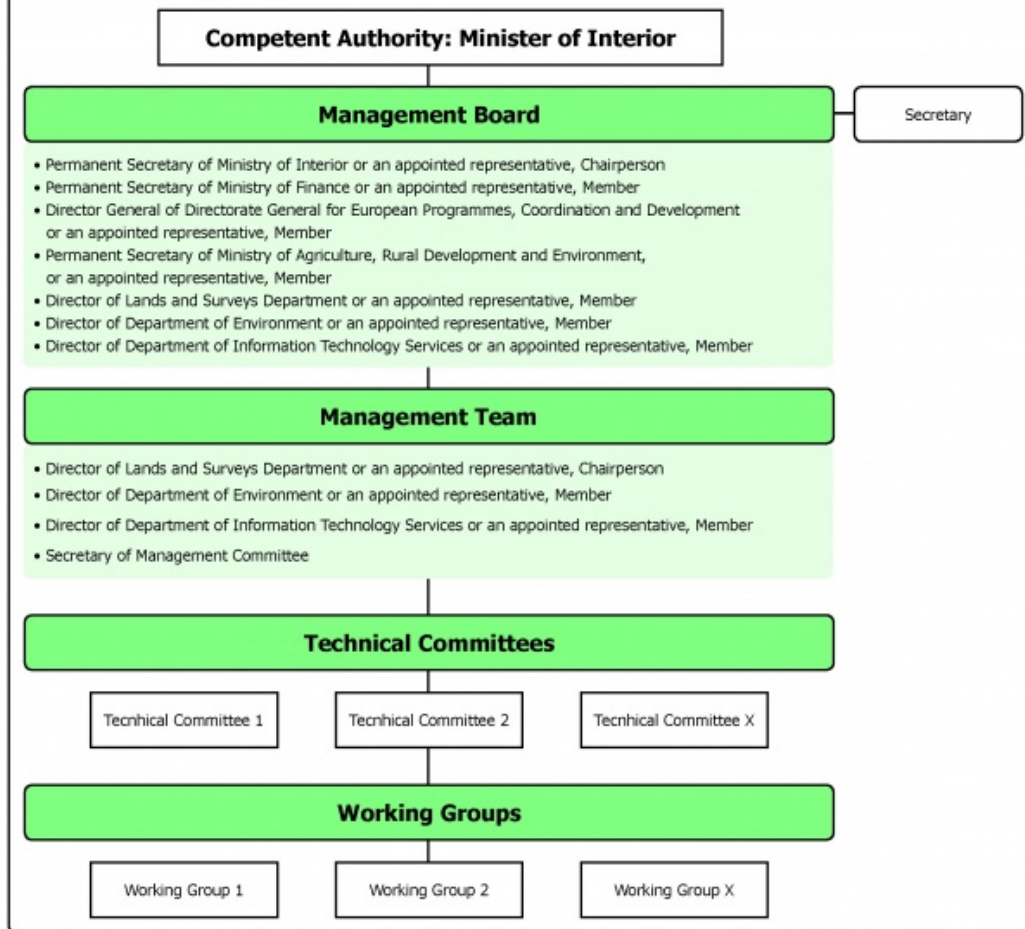
MIG T Contacts: Contact Person: Andreas Hadjiraftis

Email: ahadjiraftis@dls.moi.gov.cy

Contact Person: Anthi Lakkotrypi - Koukkouri

Email: alakkotrypi@dls.moi.gov.cy

Organizational Diagram of Directive 2007/2/EC - INSPIRE



Coordination Structure & Progress:

- **National Contact point**

Name of public authority	Ministry of the Interior
Mailing address	Dimostheni Severi Avenue, 1453, Nicosia Cyprus
Telephone number	+357 22867800
Fax number	+ 357) 22 867872 / 22804881
E-mail	perm.sec@moi.gov.cy
Website address	www.moi.gov.cy
Contact person	Andreas Hadjiraftis, Secretary for PPP and Contact Point
Telephone number	(+ 357) 22 804813
E-mail	ahadjiraftis@dls.moi.gov.cy
Contact person substitute	Anthi Koukkouri-Lakkotrypi, Representative, Ministry of the Interior
Telephone number	(+ 357) 22 804911
E-mail	alakkotrypi@dls.moi.gov.cy

- **Coordination Structure**

- The Ministry of the Interior of the Republic of Cyprus, based on the Law N.43 (I) /2010, has undertaken a coordinating role in the implementation of the INSPIRE Directive in Cyprus, while the Department of Lands and Surveys, the Department of Information Technology Services and the Department of Environment have undertaken a leading role in its organisation and implementation. Under the legislation, provisions are made for the creation of a Management Council, a Management Team, Technical Committees and Working Groups, as shown in detail in the diagram above, which are already established.

- **Progress**

Cyprus has made good progress on INSPIRE implementation since 2014. To remediate the delay on INSPIRE implementation which led to a legal pilot against Cyprus, Cyprus has initiated the following projects in 2014 which have led to implementations in 2015 and operational systems in 2016:

1. INSPIRE strategic plan and preparation of internet applications and data.
2. Preparation of a strategic plan for the Department of Lands and Surveys (DLS) and of three written calls for the further development of the new Land Information System (LIS), the development of an infrastructure for spatial and other data in Cyprus and the establishment of a pilot programme.
3. Development of a geoportal at the DLS (DLS-Portal), which includes four pillars: (a) Citizens portal, (b) Electronic Applications, (c) Interactive Maps, and (d) INSPIRE Geo-Portal (main gateway to e-services). All of these pillars are fully operational and include a very rich content. (<http://portal.dls.moi.gov.cy>).

The new [strategic plan](#) (see point 1 above) for implementing the INSPIRE programme, includes a detailed analysis of the current state of play, it details the risks and costs and provides recommendations on how to fully comply with the Directive and the timetables.

The spatial data was documented and published in a catalogue and these metadata were posted on 14 January 2016 on the geoportal of the Republic of Cyprus at www.geoportal.gov.cy. Further updates are regularly done and monitoring reports are prepared.

In addition to the above, a team of technical experts were invited in Cyprus to examine the existing INSPIRE developments and provide solutions and recommendations. This team visited Cyprus twice in 2019, managed to provide solutions to a series of technical problems, and provided a report with recommendations for further developments. The report was officially submitted to the Management Council for approval and further instructions. Based on this report, further improvements were done to the current applications and e-services by local technical experts and private company technicians.

Functioning and coordination of the infrastructure

- The INSPIRE Directive was transposed in the national law of the Republic of Cyprus with the enactment of Law N.43(I)/2010 on 14 May 2010.
- Cyprus connected their national discovery service to the EU geoportal, allowing for the publication of metadata for the available spatial data sets and services on the EU geoportal.
- The catalogue of spatial data and services is generated by the Ministry of the Interior and is updated by all responsible parties under Law N.43 (I)/2010.
- Information is available through the geoportal of the Republic of Cyprus at www.geoportal.gov.cy which is the main website providing also direct links to e-services (DLS-Portal) and national open data portal.
- Following issues identified in the strategic plan for the development of INSPIRE in Cyprus, recommendations were made and are gradually being implemented under the governance of the INSPIRE Management Board to optimize the functioning and coordination of the infrastructure.
- The Department of the Environment is represented in the coordination structure and has started to address the provisions of the INSPIRE Directive in relation to other EU Environmental Directives.
- Six years after the enactment of Law N.43 (I) / 2010 and the transposition of the INSPIRE Directive the application still showed some bottlenecks that needed further addressing such as:
 - Incomplete application of rules
 - Non fully interoperable systems and services
 - Lack of expertise
 - Time consuming procedures for further upgrading the LIS and the national portal.
- Most of the above problems have been solved, as indicated in the previous section. The Department of Lands and Surveys managed to correct and improve the system, to complete data, metadata and e-services for which is directly responsible. In addition, it helped other departments and services to improve their data. Some problems are still present regarding Annex III which includes mainly responsibilities of the Ministry of Agriculture and specifically the Department of Environment and the Department of Water Development. Problems regarding lack of expertise and technical experience still exist in these departments. Suggestions were submitted to the Management Council for the involvement of external technical experts, that will help and complete the required implementation for these departments. The Management Council requested feedback from all stakeholders in the beginning of 2022, in order re-examine the existing situation. The Management Council is currently studying the existing situation, and will invite again all stakeholders to provide their views for correcting existing issues. Among the possible solutions is the creation and operation of a parallel platform than

will accommodate additional e-services mostly for Annex III. The current technical teams will review the issues and will provide their suggestions to the Management Council for further decisions and actions.

Usage of the infrastructure for spatial information

- Public authorities are using the infrastructure for different tasks e.g. town planning, environmental studies, statistical analysis, network development (water, sewerage, telecom, electricity etc), census, web applications (eg on-line applications for controlling the COVID-19 pandemic, cadastral applications, cartographic applications etc), and academic research.
- The general public has access to the spatial data through the national geoportal and the DLS Land Information System (LIS/DLS-Portal). Actual numbers are provided daily by the Technical Support Branch. Public access and use was significantly improved. The geoportal is fully operational and the supporting DLS LIS is upgraded following a 5-year development plan. The full upgrade of the GIS component is scheduled to be completed within 2022 based on latest technology and standards (an extension of approximately 1 year was given due to the COVID-19 pandemic), whereas the LIS Legal/Fiscal Component is expected to be completed gradually within a 5-year period.
- Cross-border use of the infrastructure is also significantly improved and includes, among others, participation in European initiatives such as collaboration with neighbouring countries, EuroGeographics, EuroSDR, ICA, ISPRS, IHO, UN, and international projects.

Data sharing arrangements

- More than 95% of the data and e-services are available for free access and use/re-use. Only a small number of data are available for a very small fee. Most of the data are also available through the National Open Data Portal of Cyprus (<https://www.data.gov.cy/?language=en>). The current data-sharing application used in the Republic of Cyprus can be considered adequately successful and effective. Further use of the electronic services already created will, in the near future, indicate whether the existing policy needs to be adjusted slightly.
- The obligation to establish rules for the sharing of spatial data under a single licensing framework is described in Law N.43 (I) / 2010. These rules will become more concrete with the further implementation of the national geoportal. The fact that most data are fully open for viewing, downloading and re-use simplified the whole process, as the Government recognised that these data are very important and contribute significantly to the economy and the sustainable development of the country.
- The provisions relating to the sharing of spatial data among the public authorities of Cyprus will be applied in the same manner to public authorities of other EU member states and EU institutions, solely for environment related purposes.

Costs and benefits

- The actual cost for the further development of the current National Geospatial Information Infrastructure cannot yet be specifically determined.
- Costs are divided into three categories: infrastructure development cost, cost of production of basic geospatial reference data, and compliance costs for data producers.
- Concrete strategic actions, their implementation costs (human resources and budget) and the roadmap for implementation are outlined in the [strategic plan](#) (p.68 – p.71) which is gradually implemented. The implementation report contains an extract from this strategic plan with information on estimated costs of the strategic actions for the implementation of the infrastructure. In addition to the Strategic Plan, a technical report was prepared by a team of technical experts in 2019 as indicated above. This report, analyses the current situation, describes the corrections that were done to the INSPIRE Geoportal, identifies additional issues, and provides a cost analysis for the full implementation of the Directive, which concentrates mostly on Annex III and the remaining obligations of the Department of Environment and the Department of Water Development, emphasizing on the Priority List.
- Many qualitative benefits are outlined such as the rationalization of the economic investments and of the operational costs, thanks to the removal of duplications; a stronger participatory democracy and better competitiveness thanks to the public access to data, growing transparency and data sharing.
- Actual benefits are seen and verified everyday by numerous users, as the free access and availability of e-services, datasets and information, for viewing, direct accessing, downloading and re-using proved that they contribute significantly to the sustainable economy of Cyprus.

Key facts and figures

Cyprus 

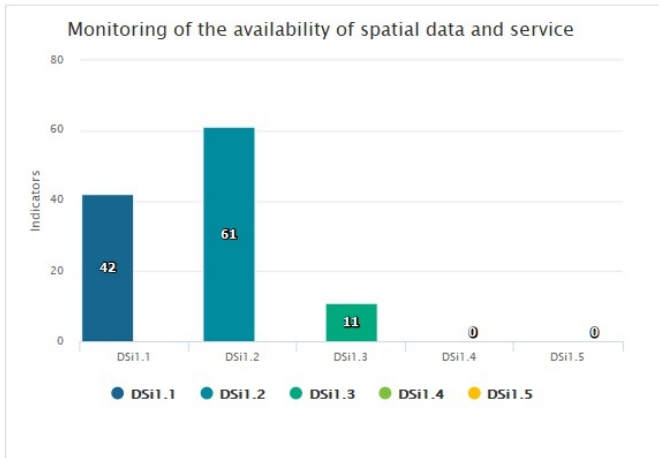
Indicators in support of [Commission Decision \(EU\) 2019/1372](#) implementing Directive 2007/2/EC

(INSPIRE) as regards to monitoring and reporting

Graphs generated with data taken from: https://inspire-geoportal.ec.europa.eu/mr2021_details.html?country=cy

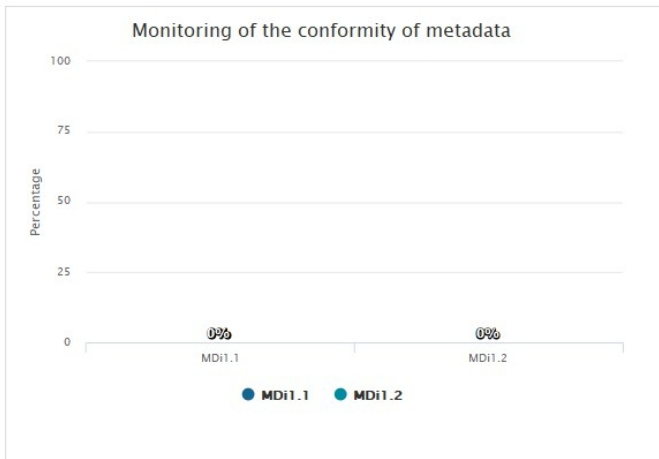
The date of harvest metadata: 15/12/2021

Endpoint: *INSPIRE-db3ec3d9-7bfb-11e6-b44d-52540023a883*



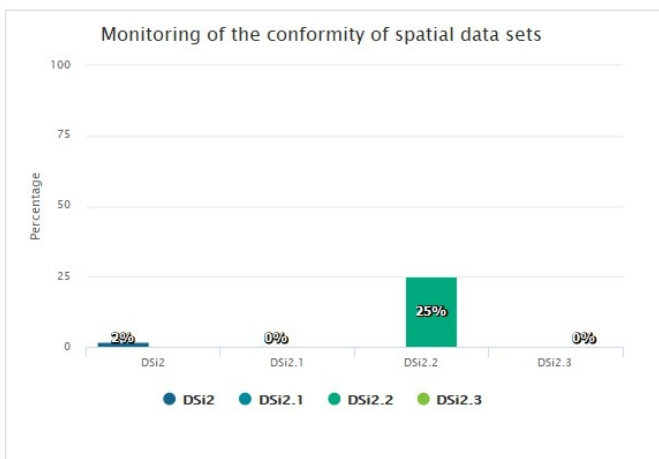
Legend

Indicator	Definition
DSi1.1	The number of spatial data sets for which metadata exist
DSi1.2	The number of spatial data services for which metadata exist
DSi1.3	The number of spatial data sets for which the metadata contains one or more keywords from a register provided by the Commission indicating that the spatial data set is used for reporting under the environmental legislation
DSi1.4	The number of spatial data sets for which the metadata contains a keyword from a register provided by the Commission indicating that the spatial data set covers regional territory
DSi1.5	The number of spatial data sets for which the metadata contains a keyword from a register provided by the Commission indicating that the spatial data set covers national territory



Legend

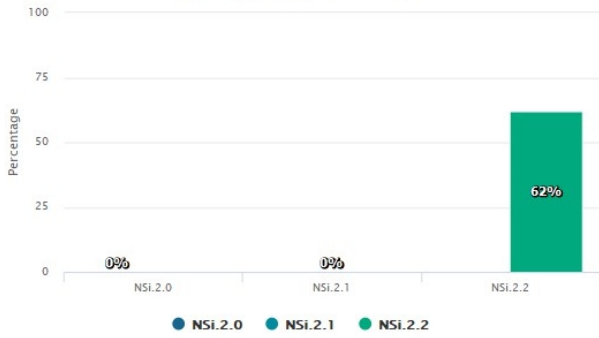
Indicator	Definition
MDi1.1	Percentage of metadata for spatial data sets conformant with Commission Regulation (EC) No 1205/2008 as regards metadata
MDi1.2	Percentage of metadata for spatial data services conformant with Commission Regulation (EC) No 1205/2008 as regards metadata



Legend

Indicator	Definition
DSi2	Percentage of spatial data sets that are in conformity with Commission Regulation (EU) No 1089/2010 as regards interoperability of spatial data sets
DSi2.1	Percentage of spatial data sets, corresponding to the themes listed in Annex I, that are in conformity with Commission Regulation (EU) No 1089/2010 as regards interoperability of spatial data sets
DSi2.2	Percentage of spatial data sets, corresponding to the themes listed in Annex II, that are in conformity with Commission Regulation (EU) No 1089/2010 as regards interoperability of spatial data sets
DSi2.3	Percentage of spatial data sets, corresponding to the themes listed in Annex III, that are in conformity with Commission Regulation (EU) No 1089/2010 as regards interoperability of spatial data sets

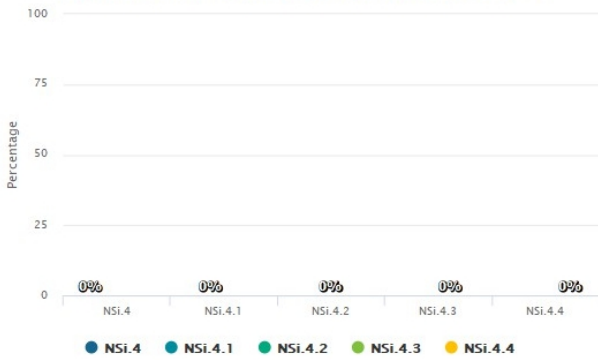
Monitoring of the accessibility of spatial data sets through view and download services



Legend

Indicator	Definition
● NSi.2.0	The Percentage of spatial data sets that are accessible through view and the download services
● NSi.2.1	The Percentage of spatial data sets that are accessible through view services
● NSi.2.2	The Percentage of spatial data sets that are accessible through download services

Monitoring of the conformity of the network services



Legend

Indicator	Definition
● NSi.4	Percentage of the network services that are in conformity with Commission Regulation (EC) No 976/2009 as regards the Network Services
● NSi.4.1	Percentage of the discovery services that are in conformity with Commission Regulation (EC) No 976/2009 as regards the Network Services
● NSi.4.2	Percentage of the view services that are in conformity with Commission Regulation (EC) No 976/2009 as regards the Network Services
● NSi.4.3	Percentage of the download services that are in conformity with Commission Regulation (EC) No 976/2009 as regards the Network Services
● NSi.4.4	Percentage of the transformation services that are in conformity with Commission Regulation (EC) No 976/2009 as regards the Network Services